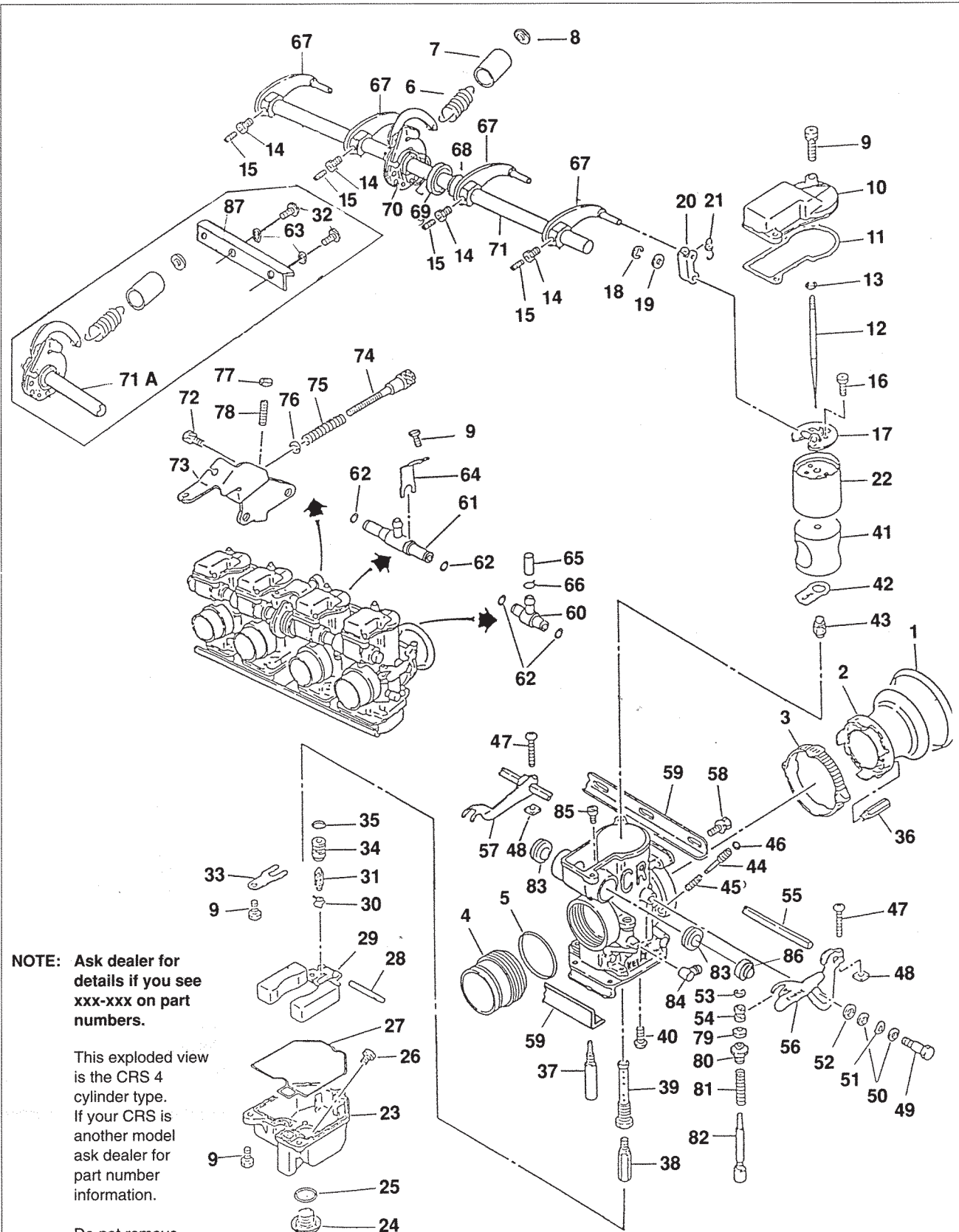


CRS (4 Cylinders) Exploded View



NOTE: Ask dealer for details if you see xxx-xxx on part numbers.

This exploded view is the CRS 4 cylinder type. If your CRS is another model ask dealer for part number information.

Do not remove parts that are not shown on this exploded view.

CRS (4 Cylinders) Parts List

NO.	DESCRIPTION	PART NO.	
		35MM - 39MM	26MM - 33MM
1	Rubber Cap	1028-809-7000	R028-004-7000
2	Velocity Stack SH.	1130-802-2001	1130-800-2001
2A	Velocity Stack LN.	1130-803-2001	1130-801-2001
3	Clamp	1129-804-7000	1129-803-7000
4	Mount Adaptor	1253-xxx-xxxx	<—
4A	Mount Adaptor	N195-xxxx	<—
5	O-ring	0901-012-6000	0901-812-6000
6	Tension Spring	1291-804-2000	<—
7	Tube	0804-846-0000	<—
8	Collar	1118-878-2000	<—
9	Screw	4139-802-1100	<—
10	Top	1030-814-2002	<—
11	Gasket	1031-802-2002	<—
12	Jet Needle	N427-51xxx	N427-11Yxx
12A	Jet Needle	N/A	N427-12Yxx
13	Clip	0403-802-1000	<—
14	Lock Nut	0208-803-1200	<—
15	Stop Screw	1034-814-2000	<—
16	Screw	W9155-04060	<—
17	Valve Plate	1019-801-2102	1019-802-2102
18	Clip	16179-676-3000	<—
19	Plain Washer	0301-825-7000	<—
20	Link Arm	1061-805-2000	<—
21	Spring	1291-802-2000	<—
22	Throttle Valve	N502-03x00	N502-04x00
23	Float Bowl	1050-825-2000	<—
24	Drain Screw	1018-801-2000	<—
25	O-ring	16173-001-0040	<—
26	Starter Jet	1001-108-2000-xxx	<—
27	O-ring	0901-811-6000	<—
28	Arm Pin	W9525-25250	<—
29	Float	1052-818-2100	<—
30	Clip	0405-019-1000	<—
31	Needle Valve	16115-ZG8-L100	<—
32	Screw	N114-06161	N/A
33	Plate	1164-038-2000	<—
34	Valve Seat	N360-01x00	<—
35	O-ring	16075-MB0-0030	<—
36	Main Air Jet	N424-14xxx	<—
37	Slow Jet	N424-24xxx	<—
38	Main Jet	99101-357-xxx0	<—
39	Nozzle Holder	N413-04x00	<—
39A	Nozzle Holder	N426-04000	<—
40	Screw	4115-800-1101	<—
41	Jet Block	1605-xxx-2001	<—
42	Gasket	1202-808-2002	1202-809-2002
43	Needle Jet	1041-800-2001	<—

NO.	DESCRIPTION	PART NO.	
		35MM - 39MM	26MM - 33MM
44	Air Screw	1014-004-2002	<—
45	Spring	1290-003-2001	<—
46	O-ring	0901-006-6000	<—
47	Screw	4110-806-1100	<—
48	Nut	0205-800-1100	<—
49	Bolt	0118-801-1100	<—
50	Plain Washer	0301-009-1100	<—
51	Wave Washer	2007-800-2000	<—
52	Plain Washer	0301-104-7000	<—
53	Clip	W9302-25000	<—
54	Collar	1118-801-2000	<—
55	Shaft	1111-813-2000	<—
56	Lever	1113-861-2001	<—
57	Lever	1113-862-2000	<—
58	Screw	4139-803-1100	<—
59	Bracket	1190-833-2000	<—
59A	Bracket	N/A	1190-853-2001
59B	Bracket	N/A	1190-854-2001
59C	Bracket	N/A	1190-855-2001
60	T-joint	1077-804-7000	<—
61	T-joint	1077-803-7000	<—
62	O-ring	W9351-13057	<—
63	Washer	0301-090-1201	N/A
64	Plate	1190-832-2000	<—
65	Rubber Cap	1028-808-7000	<—
66	Clip	W9535-55000	<—
67	Link Lever	1100-836-2100	<—
68	Collar	1118-861-7000	<—
69	Collar	1118-860-7000	<—
70	Spring	1305-883-2000	<—
71	Throttle Shaft	5025-847-2200	<—
71A	Throttle Shaft	5025-931-2100	N/A
72	Screw	4139-803-1100	<—
73	Bracket	1190-xxx-xxxx	<—
74	Idle Speed Screw	1034-808-2000	<—
75	Spring	1290-849-2003	<—
76	Plain Washer	16178-ML7-0040	<—
77	Nut	94001-05080-0S	<—
78	Screw	93500-05025-1H	<—
79	Rubber Cap	1028-042-7001	<—
80	Cap	1029-805-7000	<—
81	Spring	1300-136-2000	<—
82	Starter Valve	1166-802-2101	<—
83	Seal	1099-805-7000	<—
84	L-joint	1074-817-7001	<—
85	Starter Jet	1001-108-2000-xxx	<—
86	Cap	1096-810-2000	<—
87	Bracket	1190-870-2000	N/A

NOTE: See Tuning Components Section to find part numbers for jetting parts.